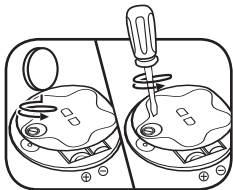


Roly Poly Penguin™

User's Manual

BATTERY INSTALLATION

1. Make sure the unit is turned **OFF**.
2. Locate the battery cover on the bottom of the unit. Use a coin or a screwdriver to loosen the screw.
3. Install 2 new "AA" (UM-3/LR6) batteries following the diagram inside the battery box. (The use of new alkaline batteries is recommended for maximum performance.)
4. Replace the battery cover and tighten the screw to secure the battery cover.



BATTERY NOTICE

- The use of new alkaline batteries is recommended for maximum performance.
- Install batteries correctly observing the polarity (+, -) signs to avoid leakage.
- Do not mix old and new batteries.
- Do not mix batteries of different types: alkaline, standard (carbon-zinc) or rechargeable (nickel-cadmium).
- Remove the batteries from the equipment when the unit will not be used for an extended period of time
- Always remove exhausted batteries from the equipment.
- Do not dispose of batteries in fire.
- Do not attempt to recharge ordinary batteries.
- The supply terminals are not to be short-circuited.
- Only batteries of the same and equivalent type as recommended are to be used.

WE DO NOT RECOMMEND THE USE OF RECHARGEABLE BATTERIES.

1

INCLUDED IN THIS PACKAGE

- One VTech® Roly Poly Penguin™
- One instruction manual



PRODUCT FEATURES

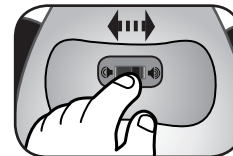
1. ON/OFF BUTTON

Press the **ON/OFF BUTTON** () once to turn the unit **ON**. Press it a second time to turn the unit **OFF**.



2. VOLUME CONTROL SWITCH

To adjust the volume, slide the **VOLUME CONTROL SWITCH** to the **LOW VOLUME** () or the **HIGH VOLUME** () position.



3. AUTOMATIC SHUT-OFF

After several seconds without input, the **VTech® Roly Poly Penguin™** will automatically power down. To turn the unit back on, press the star button.

ACTIVITIES

1. Press the **on/off button** to turn the unit on. You will hear a fun song and introductory phrase. The light will flash with the sound.
2. Press the **star button** to hear fun sounds, phrases or songs. The light will flash with the sound.
3. Rock the **penguin** to hear fun phrases, sounds, a song and random melodies.

MELODY LIST

1. Here We Go Round the Mulberry Bush
2. Old MacDonald Had a Farm
3. Skip to My Lou
4. I've Been Working on the Railroad
5. The Alphabet Song

2

SONG LYRICS

Song 1 (To the tune of “Alouette”)

I'm a little penguin, skating on the ice.
Wobble, wobble, here and there,
I will wobble everywhere!

Song 2 (To tune of “Row, Row, Row Your Boat”)

Come on, play with me,
We'll learn 1-2-3.
Sing and learn and play all day,
Happy as can be.

Song 3

Now let's see what we can explore.
Numbers, sounds and so much more!

CARE & MAINTENANCE

1. Keep the unit clean by wiping it with a slightly damp cloth.
2. Keep the unit out of direct sunlight and away from any direct heat source.
3. Remove the batteries when the unit is not in use for an extended period of time.
4. Do not drop the unit on hard surfaces and do not expose the unit to moisture or water.

TROUBLESHOOTING

If for some reason the program/activity stops working or malfunctions, please follow these steps:

1. Please turn the unit **OFF**.
2. Interrupt the power supply by removing the batteries.
3. Let the unit stand for a few minutes, then replace the batteries.
4. Turn the unit **ON**. The unit should now be ready to play again.
5. If the product still does not work, replace with a new set of batteries.

3

If the problem persists, please call our Consumer Services Department at 1-800-521-2010 in the U.S. or 1-877-352-8697 in Canada, and a service representative will be happy to help you.

For information on this product's warranty, please call **VTech**® at 1-800 521-2010 in the U.S. or 1-877-352-8697 in Canada.

Note:

This equipment has been tested and found to comply with the limits for a Class B digital device, pursuant to Part 15 of the FCC Rules. These limits are designed to provide reasonable protection against harmful interference in a residential installation. This equipment generates, uses and can radiate radio frequency energy and, if not installed and used in accordance with the instructions, may cause harmful interference to radio communications. However, there is no guarantee that interference will not occur in a particular installation. If this equipment does cause harmful interference to radio or television reception, which can be determined by turning the equipment off and on, the user is encouraged to try to correct the interference by one or more of the following measures:

- Reorient or relocate the receiving antenna
- Increase the separation between the equipment and receiver
- Connect the equipment into an outlet on a circuit different from that to which the receiver is connected
- Consult the dealer or an experienced radio/TV technician for help

Caution: changes or modifications not expressly approved by the party responsible for compliance could void the user's authority to operate the equipment.

THIS DEVICE COMPLIES WITH PART 15 OF THE FCC RULES. OPERATION IS SUBJECT TO THE FOLLOWING TWO CONDITIONS: (1) THIS DEVICE MAY NOT CAUSE HARMFUL INTERFERENCE, AND (2) THIS DEVICE MUST ACCEPT ANY INTERFERENCE RECEIVED, INCLUDING INTERFERENCE THAT MAY CAUSE UNDESIRE OPERATION.

THIS CLASS B DIGITAL APPARATUS COMPLIES WITH CANADIAN ICES-003.

CET APPAREIL NUMÉRIQUE DE LA CLASSE B EST CONFORME À LA NORME NMB-003 DU CANADA.

4

91-078200-000-006 美